

design & build

Out of the ordinary

The houses on these pages respect the local architectural vernacular, but each is distinguished by a custom design-and-build solution that maximises the site and modern living requirements





Conversation piece

From the multi-level design and sleek, contemporary interior to the dramatic cantilevered swimming pool, this house by DJ Hewitt Builders is made for entertaining on a grand scale

Preceding pages: This house, by DJ Hewitt Builders, rises over six levels, with four main storeys. The spacious family living area opens to an elevated terrace and a pool that cantilevers over a double garage. Skylights let light into an office on the lower level.

This page: The exterior features local Redcliffs stone, weatherboards and plastered concrete block. A variety of living areas, inside and out, make the house ideal for entertaining.

Sloping sites are often a challenge for both designers and builders, but they can also result in a house that offers something quite special.

This Christchurch house was designed by O'Neil Architecture with Daryl and Tara Hewitt of renowned building company DJ Hewitt Builders. It is split over six levels, with four main storeys. The layered facade is accentuated by a mix of materials, including local stone, black-painted Linea weatherboards and a white Rockcote plaster system over concrete block.

Because the owners are avid entertainers, the spacious interior flows to the outdoors,

where there are several elevated outdoor living terraces and a cantilevered pool above a garage.

Daryl Hewitt, director of the award-winning company, says the house typifies the high level of design and building expertise of the team at DJ Hewitt Builders, which has been in operation for more than 15 years.

"Many of our subcontractors have also been with us since we started," he says. "Clients can rest assured that we will hold their hands through every step of the process, from helping them choose a site and an architect, to budgeting, building, interior design and landscaping."

With its lacquered black cabinetry, stainless steel benchtops, classic tiling and high-end appliances, the kitchen is well equipped for formal and informal entertaining.

Chris Wheeler of Hierarchy Commercial Architecture worked with Daryl and Tara Hewitt to design the kitchen. Wheeler says that because the house has strong lines, the space was softened with retro curves. The curves, along with the colour and material palettes, help to link the kitchen and dining area visually.

"We wanted to create a flowing aesthetic, whereby one element leads the eye to another."

Other key design features include a large island centrepiece with stainless steel blade inserts and concealed LED lighting. The bold negative detailing, seen elsewhere in the kitchen, is repeated on the island.

Hierarchy, founded by Wheeler in 2003, is a design delivery consultancy specialising in commercial, retail, hospitality and residential architecture and interiors, promoting innovation, quality finishes and brand reinforcement. Wheeler says the firm also undertakes project management, and much of its work is repeat business from satisfied clients.

Top: A sleek, monochromatic look defines the kitchen, dining and family living areas. The kitchen was designed by Chris Wheeler of Hierarchy Commercial Architecture, with Daryl and Tara Hewitt.

Above left and right: Special features of the kitchen include a curved partition and a bank of cabinetry that incorporates high-end appliances. The classically styled tile panels on the splashback and ceiling were custom made in Hi-Macs acrylic.



Above: To contrast the black-painted weatherboards and stone walls, the house by DJ Hewitt Builders features plastered concrete block walls. These feature the Rockcote Masonry Render System, a fibreglass-reinforced plaster system finished with Rockcote Classico texture for added strength and durability. The contractor for this project was Julian Robertson of Get Plastered in Christchurch.

Contrasting textures define the different architectural elements of the facade of the house by DJ Hewitt Builders – on both the front and rear. These include plastered concrete block walls, which feature the Rockcote Masonry Render System in the Classico texture, painted in Resene House White.

Rockcote Systems general manager Mike Olds says the Masonry Render System is fully reinforced with fibreglass mesh to provide extra crack resistance. It can be applied over a range of substrates, including solid-filled masonry blocks, Integra AAC panels and brick veneers.

“Our modified render systems are all hand plastered by registered Rockcote plasterers,” Olds says. “They also feature a premium weather-protected base of Resene Limelock, and come in a variety of textural styles, and in any colour from the Resene Total Colour System. This ensures a durable and attractive finish.”

All Rockcote systems include full flashing suites, premium textures, and colours from Resene. To support its 15-year performance warranty, Rockcote also provides technical Onsite Assistance to every project during construction, and reviews projects every two years.

In any significant project, what goes on behind the scenes is every bit as important as the more visual aspects. The DJ Hewitt Builders house shown on these pages features Butynol and waterproofing membranes manufactured in Christchurch by Ardex NZ.

Marketing manager Mark Rayner says the company supplied 1.5mm Dove Grey Butynol to the roof and beneath all the pavers surrounding the swimming pool on top of the garage.

“As a synthetic butyl rubber membrane that resists ageing from heat and sunlight, Butynol is an ideal waterproofing membrane for the

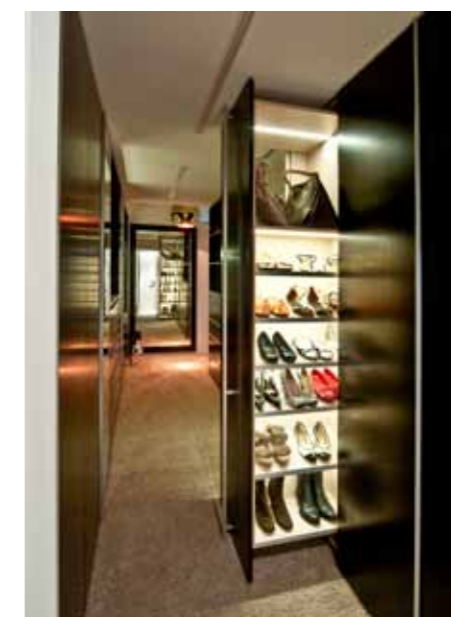
high-end houses built by DJ Hewitt Builders,” says Rayner. “It has a particularly high UV resistance and remains in all temperatures.”

Ardex NZ also supplied a waterproofing membrane, Shelterseal, for the basement. This is a peel-and-stick bituminous-asphalt membrane protected by a high-density film or mesh.

Other products supplied by Ardex include tiling adhesives and grouts, and Superflex under-tile waterproofing for the bathrooms.

The waterproofing membranes throughout the house were laid by Thomas Roofing, a Butynol accredited applicator.

This page: The Dove Grey 1.5mm Butynol waterproofing membrane used beneath the roof and pavers was manufactured locally by Ardex NZ. The pavers were fixed to the Butynol using Ardex Optima adhesive. Ardex NZ also supplied Shelterseal membrane to waterproof the basement. This can be installed over different substrates, including concrete, render, fibre-cement sheets, structural or marine plywood or polystyrene blocks.



Top: Resene paints were used on both the exterior and interior of the house. The Linea weatherboards are painted in Resene Lumbersider, tinted to Resene Nero, and the plasterwork is finished in Resene X-200 tinted to Resene House White.

Above and above right: Resene Merino is used throughout the interior, in Resene SpaceCote Low Sheen, Resene Ceiling Flat and Resene Lusta-Glo semi-gloss enamel.

Visual continuity is a prominent feature of the multi-storey house, both inside and out. Tara Hewitt of DJ Hewitt Builders says just two key colours – white and black – were used to create a distinctive, monochromatic colour palette.

Resene Lumbersider paint tinted to Resene Nero features on the Linea weatherboards. This is an Environmental Choice-approved paint based on a tough 100% acrylic resin, which ensures maximum durability in exposed areas. It has a natural satin look and is fully washable.

The exterior plasterwork is finished in Resene X-200. This is an acrylic waterproofing

membrane that incorporates the most recent advances in polymer and paint technology for greater adhesion and durability.

Both exterior products are available using Resene CoolColour technology that's formulated to reflect more of the sun's energy than standard colours. This keeps the coating cooler.

Resene SpaceCote Low Sheen features on the interior, tinted to Resene Merino. This waterborne, low-odour, Environmental Choice-approved paint provides a durable, washable finish. Other paints used include Resene Ceiling Flat and Resene Lusta-Glo semi-gloss enamel.

Architectural designer: O'Neil Architecture, PO Box 130052, Christchurch, phone (03) 379 3004, fax (03) 379 3005. Website: www.oneil.co.nz

Builder: DJ Hewitt Builders, 12 Challenger Lane, Redcliffs, Christchurch 8081, phone (03) 384 7470, fax (03) 384 7471. Email: daryl@djhewitt-builders.co.nz. Website: www.djhewitt-builders.co.nz

Kitchen designer: Hierarchy Commercial Architecture, Unit 1, 12 Moorehouse Ave, Waltham, Christchurch 8011, phone (03) 963 8031. Website: www.hierarchy.co.nz

Exterior plaster: Rockcote Systems, freephone 0800 507 040. Email: help@rockcote.co.nz. Website: www.rockcote.co.nz

Roofing and waterproofing membranes: Ardex NZ, 32 Lane St, Woolston 8023, phone (03) 373 6900, fax (03) 384 9779. Email: techinfo@butynol.co.nz. Website: www.butynol.co.nz

Windows: Hagley Building Products, PO Box 6121, Christchurch, phone (03) 338 8235, fax (03) 338 8006. Email: chchsales@hagley.co.nz. Website: www.hagley.co.nz

Paints: Resene ColorShop, freephone 0800 Resene (737 363). Website: www.resene.co.nz

Painting and decorating: Greystone Painters and Decorators, phone 021 354 804, fax (03) 384 9860. Email: greystone.painters@gmail.com

Lighting: Lume Design, phone (03) 377 7541. Email: info@lumedesign.co.nz. Website: www.lumedesign.co.nz

Tiles and carpets: Dore's For Floors, 102 Montreal St, Sydenham, PO Box 1910, Christchurch 8140, phone (03) 366 9400, fax (03) 365 4406. Website: www.dores.co.nz

Joinery: Hooper Joinery, PO Box 10237, Christchurch, phone (03) 366 9629, fax (03) 366 9630. Email: info@hooperjoinery.com. Website: www.hooperjoinery.com

Tile grouting, adhesives and waterproofing: Ardex NZ, 32 Lane St, Woolston 8023, phone (03) 373 6900, fax (03) 384 9779. Email: techinfo@butynol.co.nz. Website: www.butynol.co.nz

Scaffolding: Daveron Scaffolding, PO Box 10278, Christchurch 8145, phone (03) 366 6227, fax (03) 366 6237. Email: enquiries@daveronscaffolding.co.nz. Website: www.daveronscaffolding.co.nz

Photography by Daniel Allen, courtesy of NZ House & Garden